

Takeoff — Aspen

Blocking					
Qty	Description	Width	Depth	Length	
1	TJ 1.5E TimberStrand LSL	1.5	5.5		4
Headers					
Qty	Label	Description	Width	Depth	Length
6	Hd1	TJ 2.0E Microllam LVL	1.75	5.5	8
12	Hd2	TJ 2.0E Microllam LVL	1.75	5.5	6
Plates					
Qty	Label	Description	Width	Depth	Length
1	BP1	TJ 1.5E TimberStrand LSL	1.5	5.5	16
2	HBP1	TJ 1.5E TimberStrand LSL	1.5	5.5	6
2	HBP2	TJ 1.5E TimberStrand LSL	1.5	5.5	4
2	TP1	TJ 1.5E TimberStrand LSL	1.5	5.5	12
2	VTP1	TJ 1.5E TimberStrand LSL	1.5	5.5	12
Studs/Cripples					
Qty	Label	Description	Width	Depth	Length
2	a	TJ 1.5E TimberStrand LSL	1.5	5.5	10
3	b	TJ 1.5E TimberStrand LSL	1.5	5.5	6
8	c	TJ 1.5E TimberStrand LSL	1.5	5.5	4
19	d	TJ 1.5E TimberStrand LSL	1.5	5.5	2
King Studs					
Qty	Label	Description	Width	Depth	Length
8	K1	TJ 1.5E TimberStrand LSL	1.5	5.5	16
4	K2	TJ 1.5E TimberStrand LSL	1.5	5.5	12
Jacks					
Qty	Label	Description	Width	Depth	Length
8	J1	TJ 1.5E TimberStrand LSL	1.5	5.5	8
2	J2	TJ 1.5E TimberStrand LSL	1.5	5.5	6
2	J3	TJ 1.5E TimberStrand LSL	1.5	5.5	2

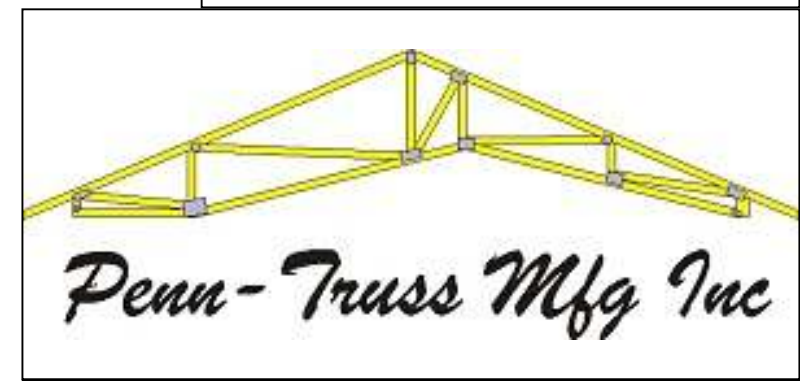
General Installation Notes

- Do not cut holes or notches unless noted otherwise.
- Provide solid blocking below columns/kings/jacks to foundation.
- Provide horizontal blocking in wall every 8'-0" of height.
- Design assumes structural sheathing on outside of wall.
- Design is for gravity loads and/or wind loads perpendicular to the wall framing. Wall has not been designed as a shear wall and loads parallel to wall framing are not considered.
- Opening sizes should be verified before construction.

Label	Qty	Material	Overall Length
a	2	TJ 1.5E TimberStrand LSL 1.5X5.5 40° \ 9-10-7	
c	8	TJ 1.5E TimberStrand LSL 1.5X5.5 40° \ 2-0-13 \ 40°	
HBP1	2	TJ 1.5E TimberStrand LSL 1.5X5.5 40° / 5-8-15 \ 40°	
HBP2	2	TJ 1.5E TimberStrand LSL 1.5X5.5 50° / 2-6-5 \ 40°	
b	3	TJ 1.5E TimberStrand LSL 1.5X5.5 4-1-0	
VTP1	2	TJ 1.5E TimberStrand LSL 1.5X5.5 40° / 10-6-3 / 40°	
TP1	2	TJ 1.5E TimberStrand LSL 1.5X5.5 40° / 10-6-3 / 40°	
BP1	1	TJ 1.5E TimberStrand LSL 1.5X5.5 16-0-0	
Hd2	12	TJ 2.0E Microllam LVL 1.75X5.5 4-4-0	
Hd1	6	TJ 2.0E Microllam LVL 1.75X5.5 40° / 6-0-4 / 40°	
d	19	TJ 1.5E TimberStrand LSL 1.5X5.5 0-6-0	
K2	4	TJ 1.5E TimberStrand LSL 1.5X5.5 40° \ 10-7-3	
K1	8	TJ 1.5E TimberStrand LSL 1.5X5.5 40° \ 14-3-12	
J1	8	TJ 1.5E TimberStrand LSL 1.5X5.5 6-8-8	
J3	2	TJ 1.5E TimberStrand LSL 1.5X5.5 40° \ 0-9-12	
J2	2	TJ 1.5E TimberStrand LSL 1.5X5.5 40° \ 4-3-13	

Multiple Member Connections

- 2-ply 2x4/6/8 or 1-3/4" LVL/LSL
Fasten with minimum 2 rows of 16d pneumatic nails at 10" o.c. staggered.
- 3-ply 2x4 or 1-3/4" LVL/LSL
Fasten with minimum 2 rows 16d pneumatic nails at 8" o.c. staggered. Nail from both sides.
- 3-ply 2x6/8 or 1-3/4" LVL/LSL
Fasten with minimum 3 rows 16d pneumatic nails at 5" o.c. staggered. Nail from both sides.
- 4-ply 2x4 or 1-3/4" LVL/LSL
Fasten each ply with minimum 2 rows 16d pneumatic nails at 5" o.c. Offset nail rows by 2" from the ply below.
- 4-ply 2x6/8 or 1-3/4" LVL/LSL
Fasten each ply with minimum 3 rows 16d pneumatic nails at 5" o.c. Offset nail rows by 2" from the ply below.



Project	Box 418
Designer	Saltcoats, Saskatchewan
	Canada
Sales Rep	S0A 3R0
Colin Penner	306-744-2403